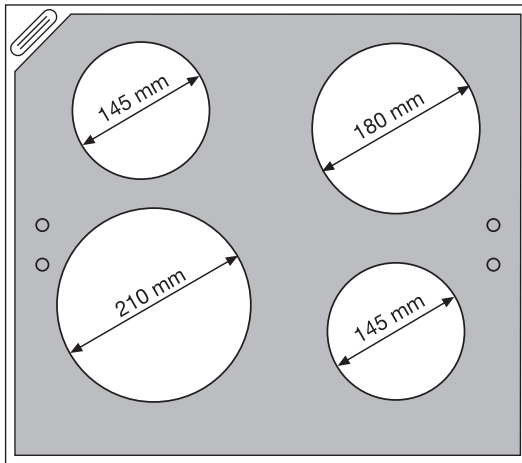


61000M

Glaskeramik-Kochfeld
Ceramic glass hob
Encimera de vitrocerámica
Κεραμική μαγειρική εστία

Montage- und Gebrauchsanweisung
Installation and Operating Instructions
Instrucciones para el montaje y para el uso
Οδηγίες συναρμολόγησης και χρήσης



Dear customer,

Please read these operating instructions carefully.

Pay particular attention to the section "Safety information" on the first few pages. Please retain these operating instructions for later reference. Pass them on to possible new owners of the appliance.

The following symbols are used in the text:



Safety instructions

Warning: Information concerning your personal safety.

Important: Information on how to avoid damaging the appliance.



Information and practical tips



Environmental information

1. These numbers indicate step by step how to use the appliance.

2. ...

3. ...

These operating instructions contain information on steps you can take yourself to rectify a possible malfunction. Refer to the section "What to do if...".

In the event of any technical problems please contact your nearest customer service centre at any time. (Addresses and telephone numbers may be found in the appendix under "Customer Service Centres").

You should also refer to the section "Service".

Printed on recycled paper.

Thinking ecologically means acting ecologically ...

Contents

Operating Instructions	22
Safety	22
Disposal	24
The Key Features of Your Appliance	24
Description of the Appliance	25
Cooking surface layout.....	25
Before Using for the First Time	25
Initial Cleaning.....	25
Operating the Hob	26
Residual heat indicator.....	26
Uses, Tables and Tips	27
Pans.....	27
Cleaning and Care	29
Hob.....	29
Hob Frame.....	30
What to do if	31
Rectifying faults.....	31
Installation Instructions	32
Technical Data.....	32
Regulations, Standards, Directives.....	33
Electrical Connection.....	34
Service	35
Assembly	74

Operating Instructions



Safety

The safety aspects of this appliance comply with accepted technical standards and the German Appliance Safety Law. However, as manufacturers we also believe it is our responsibility to familiarise you with the following safety instructions.

Electrical Safety

- The installation and connection of the new appliance must only be carried out by qualified personnel.
- Repairs to the appliance are only to be carried out by approved service engineers. Repairs carried out by inexperienced persons may cause injury or serious malfunctioning. If your appliance needs repairing, please contact your local customer center or your dealer.



Please follow these instructions, otherwise the warranty will not cover any damage that may occur.

- Flush-mounted appliances may only be operated following installation in suitable installation cabinets and workplaces which conform to the relevant standards. This ensures sufficient protection against contact for electrical units as required by the VDE [Association of German Electrical Engineers].
- If your appliance malfunctions or if fractures, cracks or splits appear:
 - switch off all cooking zones,
 - disconnect the hob from the electricity supply.

Child Safety

The cooking zones will become hot when you cook. Therefore, always keep small children away from the appliance.

Safety During Use

- This appliance may only be used for normal cooking and frying in the home. It is not designed for commercial or industrial purposes.
- Do not use the hob to heat the room.
- Take care when plugging electric appliances into mains sockets near the hob. Connection leads must not come into contact with the hot surface.
- Overheated fats and oils catch fire quickly. You should supervise cooking when preparing foods in fat or oil (e.g. chips).
- Switch off the cooking zones after use.

Safety When Cleaning

- For safety reasons do not clean the appliance with a steam jet or high pressure cleaner.
- Clean the hob in accordance with the maintenance and cleaning instructions in this manual.

To Avoid Damaging Your Appliance

- Do not use the hob as a work surface or for storage.
- Do not operate the cooking zones when there is no pan or the pans are empty.
- Ceramic glass is insensitive to temperature shock and very robust; however it is not unbreakable. Especially sharp and hard objects that fall on the cooking surface can damage it.
- Do not use cast iron pans or pans with a rough, burred or damaged base. Scratching may occur if the pans are slid across the surface.
- Do not place any pans on the hob frame. Scratching and damage to the paint may occur.
- Make sure that no acidic liquids, e.g. vinegar, lemon or descaling agents, are spilt onto the hob frame, since these cause dull spots.
- If sugar or a preparation with sugar comes into contact with the hot cooking zone and melts there it must be cleaned off immediately with a scraper while it is still hot. If it cools, the surface may be damaged when it is removed.
- Keep all items and materials that can melt away from the ceramic glass surface, e.g. plastics, aluminium foil, or oven foils. If something of this nature should melt onto the ceramic glass surface, it must also be removed immediately using the scraper.



Disposal

Disposing of the packaging material

All materials used can be fully recycled.

Plastics are marked as follows:

- >PE< for polyethylene, as used for the outer wrapping and the bags inside.
- >PS< for polystyrene foam, e.g., as used for the padding materials. They are completely free of CFCs.

Disposal of old appliances



Warning: Before disposing of old appliances please make them inoperable so that they cannot be the source of danger.

To do this, disconnect the appliance from the mains supply and remove the mains lead.

To protect the environment, it is important that worn out appliances are disposed of in the correct manner.

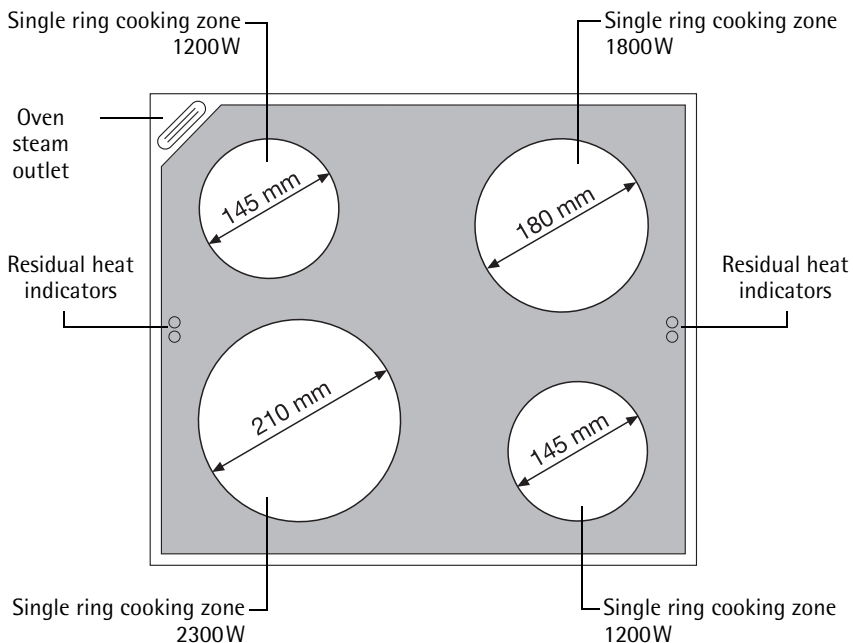
- The appliance must not be disposed of with household rubbish.
- You can obtain information about collection dates or public refuse disposal sites from your local refuse department or council.

The Key Features of Your Appliance

- **Ceramic glass cooking surface:** The appliance has a ceramic glass cooking surface and 4 rapid response cooking zones. The particularly powerful radiant heater elements significantly shorten the amount of time taken for the zones to heat up.
- **Cleaning:** The advantage of the ceramic glass cooking surface is its easy cleaning. The smooth surface is easy to keep clean (see section: "Cleaning and care").
- **Residual heat indicator:** The residual heat indicator lights up if the cooking zone becomes so hot that there is a risk of burning.

Description of the Appliance

Cooking surface layout



Before Using for the First Time

Initial Cleaning

Wipe the ceramic glass surface with a damp cloth.



Important: Do not use any caustic, abrasive cleaners! The surface could be damaged.

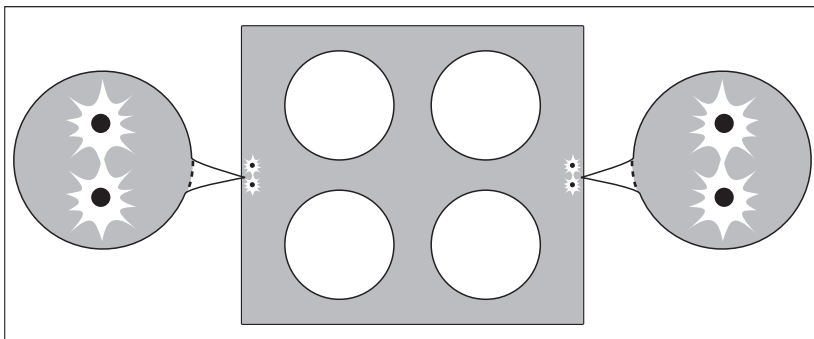
Operating the Hob

i When a cooking zone is switched on, it may hum briefly. This is a characteristic of all ceramic glass cooking zones and does not impair either the function or the life of the appliance.

i **The cooking zones are controlled using the ring switches on the hob, or in the switch box, as described in the user instructions provided with the appliance.**

Residual heat indicator

The ceramic cooking zone is equipped with a residual heat indicator, a control lamp is allocated to each cooking zone. This lights up as soon the corresponding cooking zone is hot and warns against inadvertant contact.



The residual heat indicator only goes out when the cooking zone has cooled down even when the cooking zone is switched Off.

♣ You can use the residual heat for melting and keeping food warm.

! **Important!** As long as the residual heat indicator is illuminated, there is a risk of burns.

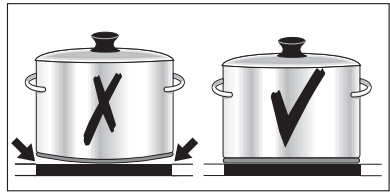
! **Important!** If the power supply is interrupted the residual heat indicator also goes out and information about residual heat will no longer be available. However, it is still possible to burn yourself. This can be avoided by being particularly attentive.

Uses, Tables and Tips

Pans

The better the pan, the better the results.

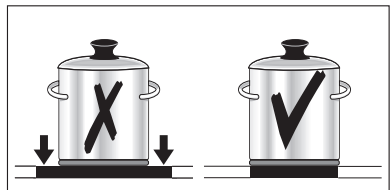
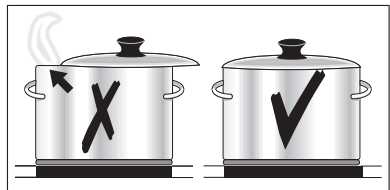
- You can recognise good pans by their bases. The base should be as thick and flat as possible.
- Pay particular attention when buying new pans to the diameter of the base. Manufacturers often give only the diameter of the upper rim.
- Pots with aluminium or copper bases can cause metallic discolouring on the glass ceramic surface, which is very difficult or impossible to remove.
- Do not use cast iron pans or pans with a rough, burred or damaged base. This can produce permanent scratching if the pan is slid across the surface.
- When cold, pan bases are normally bowed slightly inwards (concave). They should never be bowed outwards (convex).
- If you wish to use special types of pan (e.g. a pressure cooker, simmering pan, wok, etc.), please observe the manufacturer's instructions.



Energy saving tips

You can save valuable energy by observing the following points:

- Always position pots and pans before switching on the cooking zone.
- Dirty cooking zones and pan bases increase power consumption.
- Whenever possible always position the lids firmly on pots and pans to cover completely.
- Switch off the cooking zones before the end of the cooking time to use the residual heat such as to keep foods warm or for melting.
- The base of the pan should be the same size as the cooking zone.
- Using a pressure cooker reduces cooking times by up to 50%.



Settings for Cooking on the Rings

The setting position required for cooking processes is dependent on the quality of the pots and on the type and amount of the food.

Heat setting	Cooking method	Examples
9	Parboiling	Starting of cooking and roasting, cooking of large quantities of liquid, then switch-back to appropriate setting
7-9	Frying Quick frying	French fries, pan-cakes Fillet of pork and beef, steaks goulash
6-7	Roasting Frying without crust	Frying of meat, schnitzel, cutlets, meat-balls, sausages, liver, fish-fillet in deep fat, Frying eggs or chops
4-5	Boiling Braising	Boiled potatoes, stews, soups, hot-pot, sauces in large quantities
3-4	Simmering Stewing	Simmering of vegetables, braising of meat, lightly cooking small amount of fruit with little liquid
2-3	Gentle simmering	Simmering of rice and food with milk (sometimes stirring), Stewing of smaller amount of potatoes or vegetables, Warming up of prepared meal
1-2	Melting	Omelette, fried eggs, Hollandaise sauce, Keeping warm a meal or small amount of hot-pot Melting of butter, chocolate, gelatine.
0		Residual heat, OFF-position



When heating up or frying, we recommend heat setting "9", and then continue cooking foods at an appropriate lower heat setting.

Cleaning and Care

Hob



Important: Cleaning agents must not come into contact with the **hot** ceramic glass surface! All cleaning agents must be removed with plenty of clean water after cleaning because they can have a caustic effect when the rings are next heated!

Do not use any aggressive cleaners such as grill or oven sprays, coarse scourers or abrasive pan cleaners.



Clean the ceramic glass surface after each use when it is warm to the touch or cold. This will avoid spillages becoming burnt on.

Remove scale and water marks, fat spots and discolouration with a metallic shimmer using a commercially available ceramic glass or stainless steel cleaner.

Light Soiling

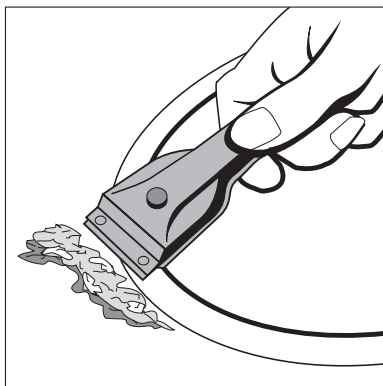
1. Wipe the ceramic glass surface with a damp cloth and a little washing up liquid.
2. Then rub dry with a clean cloth. Remnants of cleaner must not be left on the surface.
3. Thoroughly clean the entire ceramic glass cooking surface once a week with a commercially available ceramic glass or stainless steel cleaner.
4. Then wipe the ceramic glass surface using plenty of clean water and rub dry with a clean fluff-free cloth.

Stubborn Soiling

1. To remove food that has boiled over or stubborn splashes, use a glass scraper.
2. Place the glass scraper at an angle to the ceramic glass surface.
3. Remove soiling by sliding the blade.



You can obtain glass scrapers and ceramic glass cleaners from specialist retailers.





Problem Dirt

1. Remove burnt-on sugar, melted plastic, aluminium foil or other meltable materials with a glass scraper **immediately and while still hot**.



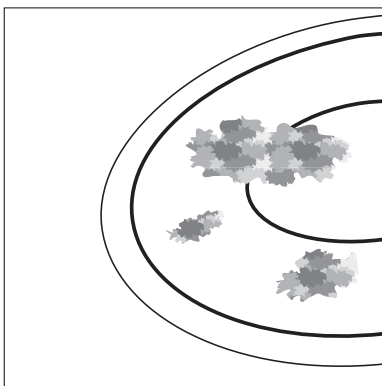
Important: There is a risk of burning yourself when the glass scraper is used on a hot cooking zone!

2. Then clean the hob normally when it has cooled down.



If the cooking zone on which something has melted has already cooled down, warm it up again for cleaning.

Scratches or dark marks on the ceramic glass surface, caused for example by a pan base with sharp edges, cannot be removed. However, they do not impair the function of the hob.



Hob Frame



Important! Do not put vinegar, lemon-juice or scale removers on the hob frame, otherwise dull spots will appear.

1. Wipe the frame with a damp cloth and a little washing up liquid.
2. Soften dried dirt with a wet cloth. Then wipe off and rub dry.

What to do if ...

Rectifying faults

It is possible that faults have been caused by a minor error, which you can correct yourself with the help of the following instructions. Do not attempt any further repairs if the following instructions do not help in each specific case.



Warning! Repairs to the appliance are only to be carried out by approved service engineers. Improperly effected repairs may result in considerable risk to the user. If your appliance needs repairing, please contact your specialist dealer or customer service.

What to do when ...

... the cooking zone does not function?

Check whether

- the fuses in the house installation (fuse box) are intact. If the fuses switch off, or blow, several times, please call a qualified electrician.
- the corresponding cooking zone is switched ON and the desired heat setting has been selected.
- for cooking zones with several rings, the desired ring has been switched ON.

If a service engineer's visit is necessary due to incorrect operation, the service visit will not be free of charge, even during the guarantee period.

Installation Instructions



Important! The new appliance may only be installed and connected by **qualified personnel**.

Please observe this instruction, otherwise the warranty will not cover any damage that may occur.

Technical Data

Appliance dimensions

Width	572 mm
Depth	502 mm
Height	42 mm

Worktop cut-out dimensions

Width	560 mm
Depth	490 mm
Corner radius	R5

Cooking rings

Position	Diameter	Power
Front left	210mm	2300W
Rear left	145mm	1200W
Rear right	180mm	1800W
Front right	145mm	1200W

Connection voltage 400V ~ 50Hz

Maximum connected load power 6,5kW

Regulations, Standards, Directives

This appliance meets the following standards:

- EN 60 335-1 and EN 60 335-2-6
relating to the safety of electrical appliances for household use and similar purposes and
- EN 60350, or DIN 44546 / 44547 / 44548
relating to the operating features of electric cookers, hobs, ovens, and grills for household use.
- EN 55014-2
- EN 55014
- EN 61000-3-2
- EN 61000-3-3
- relating to basic requirements for electro-magnetic compatibility protection (EMC).



This appliance complies with the following EU Directives:

- 73/23/EWG dated 19.02.1973 (Low Voltage Directive)
- 89/336/EWG dated 03.05.1989 (EMC Directive including Amending Directive 92/31/EWG).

Electrical Connection

- Before connection, check whether the nominal voltage of the appliance, the voltage stamped on the nameplate, is in agreement with the available supply voltage and the nominal voltage of the combination appliance. The nameplate is situated on the under-covering of the cooking surface.
- Bring the connection plug of the cooking unit together with the corresponding parts of the built-in stove or switchbox and connect them tightly. Ensure that the connection cables are routed along the side of the oven.



Following connection to the mains supply, all cooking zones must be switched on, at the maximum setting, one after the other for approx. 30 seconds to check that they function correctly.

Service

In the "What to do if ..." section a number of malfunctions are listed that you can rectify yourself. Look there first if a fault occurs.

Is it a technical fault?

If so, please contact your customer service centre. (You will find addresses and telephone numbers in the section "Customer Service Centres".)

Always prepare in advance for the discussion. This will make diagnosis of the problem easier and also make it easier to decide if a customer service visit is necessary:

Please make a note of the following information as accurately as possible:

- What form does the fault take?
- Under what circumstances does the fault occur?

Prior to the telephone call it is important that you make a note of the following appliance code numbers that are given on the rating plate:

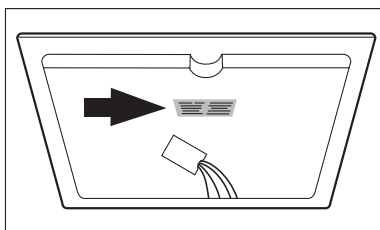
- model description,
- PNC code (9 digits),
- S No code (8 digits).

We recommend that you record the code numbers here so that you always have them to hand:

Model:

PNC:

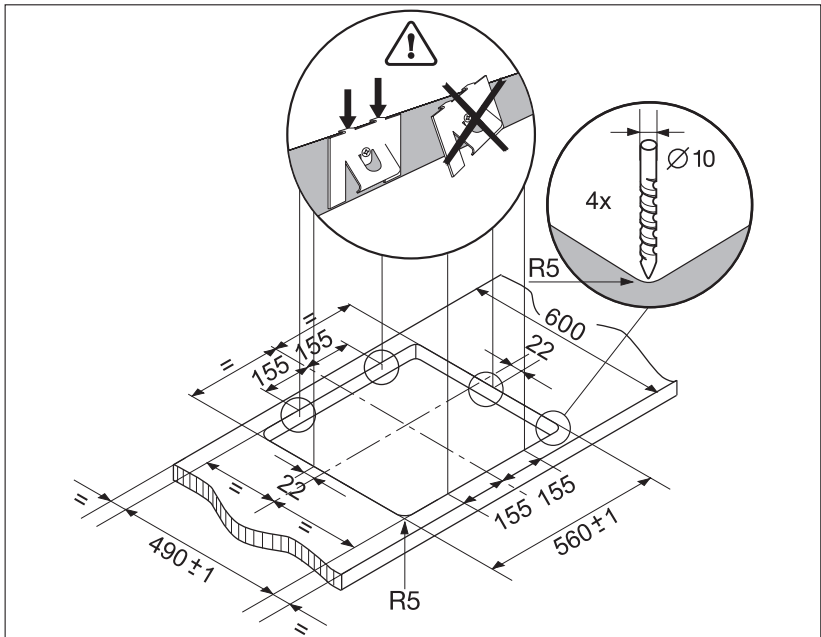
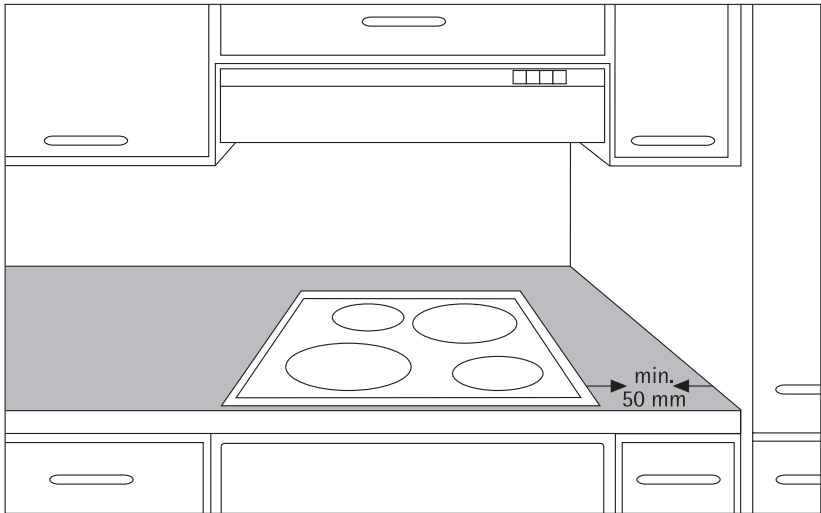
S-No:

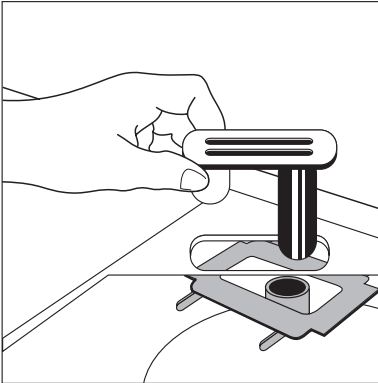
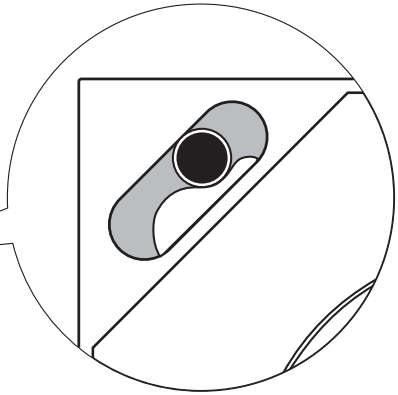
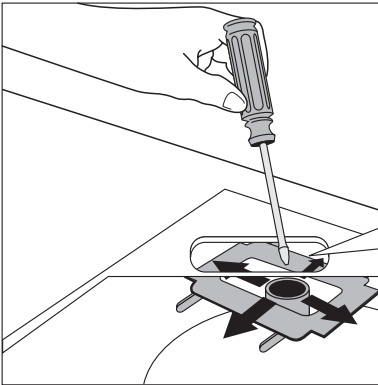
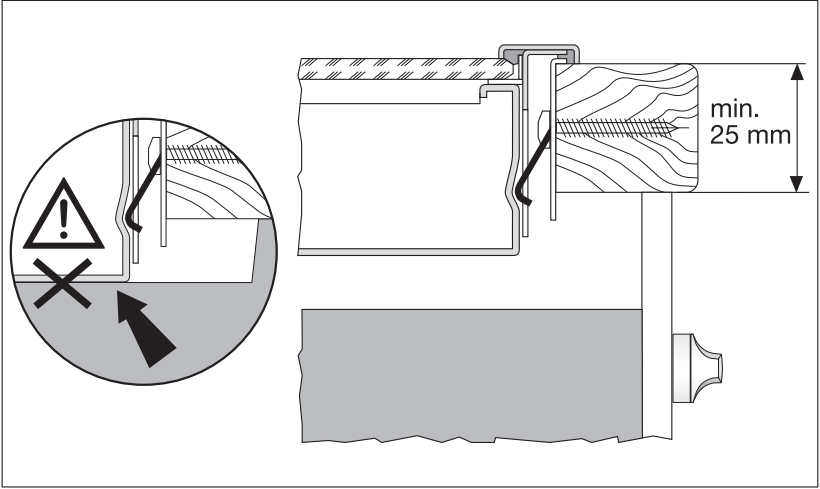


When do you incur costs even during the warranty period?

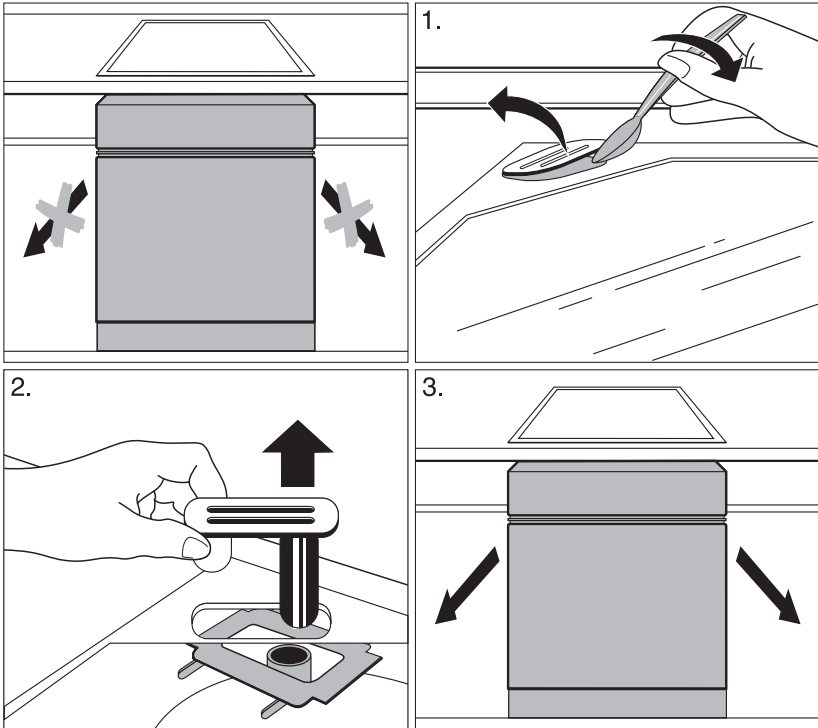
- if you could have remedied the fault yourself using the fault table (see section "What to do if ..."),
- if the customer service technician has to make several journeys because he was not provided with all the relevant information before his visit and therefore, for example, has to fetch spare parts. These multiple trips can be avoided if you prepare your phone call as described above.

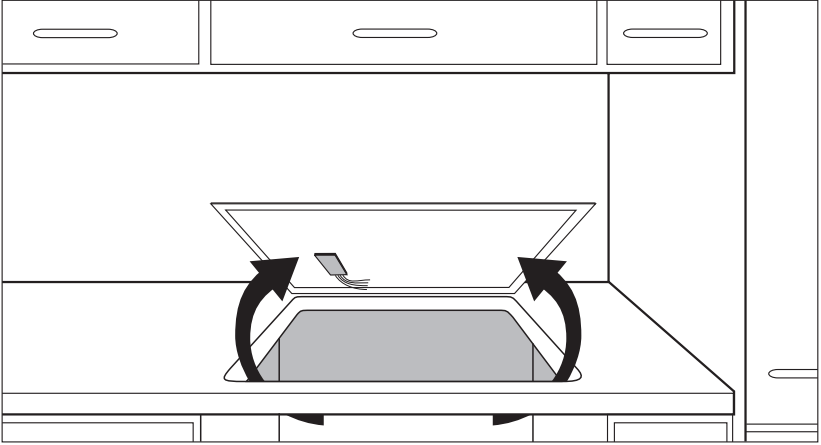
Montage / Assembly / Montaje / Τοποθέτηση





Ausbau / Removal / Desmontaje / Απεγκατάσταση





 **From the Electrolux Group. The world's No. 1 choice.**

The Electrolux Group is the world's largest producer of powered appliances for kitchen, cleaning and outdoor use. More than 55 million Electrolux Group products (such as refrigerators, cookers, washing machines, vacuum cleaners, chain saws and lawn mowers) are sold each year to a value of approx. USD 14 billion in more than 150 countries around the world.

Hier Typenschild aufkleben

(nur für Werk)

AEG Hausgeräte GmbH
Postfach 1036
D-90327 Nürnberg

<http://www.aeg.hausgeraete.de>

© Copyright by AEG

822 947 234-B-060303-13

Änderungen vorbehalten

Subject to change without notice

Salvo modificaciones

Υπόκειται σε αλλαγές χωρίς προειδοποίηση